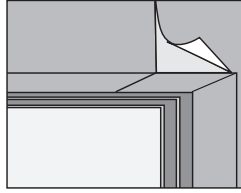


Recessed Openings

Hang the length that overlaps the recess. Cut a horizontal line a fraction above the head of the window, back to the top corner of the recess. Cut a line a fraction below the top of the sill, back to the bottom corner of the recess.



Allowing for pattern matching and trimming, cut a piece to suit the recess at the top as if it were a continuation of the length just hung.

Paste a piece and position it, aligning the pattern. Slide the front edge up under the main length. Trim the two pieces just above the head of the window, using a sharp blade and a straight edge.

Remove offcuts and smooth down. Continue papering above and below the recessed frame, treating the top as an external angle. Treat the far side exactly the same as the first side of the recess.

Build it
Yes We Can!

We say
Yes
to getting
the job
done right



Learn how to apply
wallpaper



SCAN TO
DOWNLOAD



DECOR

Find your local store using
our Store Locator at

www.buildit.co.za

Free

40

Build it

Yes We Can!

Hanging

Wallpaper



B

Follow these easy steps to hanging wallpaper and you will find the job easier than you imagined.

TOOLS REQUIRED

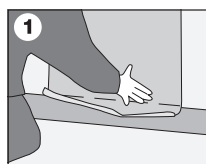
- Scissors
- Level
- Pencil
- Trestle Table
- Hanging Brush
- Craft Knife
- Bucket
- Brush (wallpaper)

MIXING YOUR PASTE

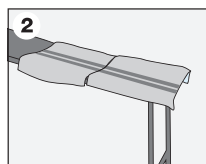
Mix your paste in a bucket according to manufacturers instructions. Follow these instructions carefully, as they will vary according to the type of paper you are hanging. You may alternatively, purchase a ready-mix paste suitable to the paper you are hanging. You will also need a large pasting brush to apply your paste with.

CUTTING THE PAPER

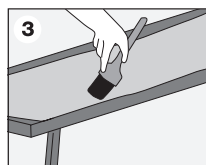
Measure the lengths of the first “drop” of paper. Add three or four inches to this to allow for trimming both ends.



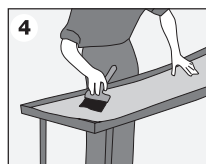
With first piece face up on the table, unroll a second piece next to it, aligning the pattern before cutting to length.



Load your brush and apply the paste along the centre of the piece of paper. Paste the far sides working outwards in a crisscross manner from the centre.



Slide the paper towards you so that it overhangs the near side of the table in the same way as before. Repeat pasting process. You can also apply paste using a roller, but only work in one direction, or you will find the paper being rolled up in it.



HANGING PAPER FIRST PIECE

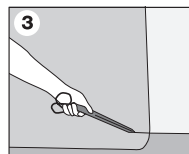
Take the first length of paper and unfold the top end. Leave the bottom end folded for the moment. Holding the paper in both hands, line up with your vertical mark on the wall. Allow an overlap at the top for trimming, gently push the paper against a wall, making adjustments to its position by gentle sliding.



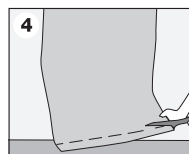
Using a hanging brush, smooth down the centre of the paper to push out the air. Smooth downwards at an angle towards the outer edges either side on the centre. You will avoid creases by working in one direction.



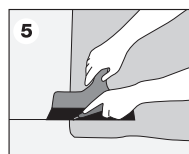
To mark the ends for trimming, use the back edge of scissors to score a light line along the ceiling or skirting angle.



Lift the paper away from the wall a little at a time and trim to this line. Brush the paper back down against the wall, especially at the ends.



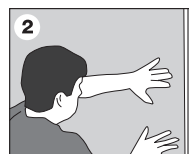
Another trimming option is to use a steel straight edge pushed firmly into an angle to be trimmed and cut the paper with a craft knife.



When the next drop is pasted and ready to hang, repeat the process. Use the edge of previous drop to line up.



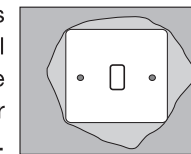
It may be easier to position the paper on the wall, a fraction away from the edge of the preceding piece and then slide into position. Continue hanging the paper in this manner to the end of the first wall.



TRIMMING AROUND OBSTRUCTIONS

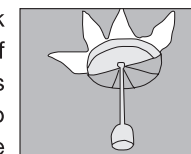
Switches and Sockets

Slacken the retaining screws for each unit as you get to it. Hang the paper in the normal way, allowing it to go over the switch but be careful not to damage it. Press the paper lightly over the switch to identify four corners. Mark these and cut through the paper from the centre of the switch out towards these marks. Gently ease the paper back to the wall around the switch. Four triangles of paper pointing towards you is what you are left with. Trim these back and allow a little to tuck in behind the switch cover. Move the switch plate away from the wall and gently brush these pieces behind it. Reposition the switch and slightly tighten the screws.



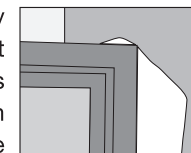
Round and Shaped Items

Hang the paper lightly over the item. Mark the centre and cut from the nearest edge of the paper to this point. Make radial cut outs from this mark. Push the paper back into place. Mark the flaps where they meet the edge of the item and trim before brushing the paper back.



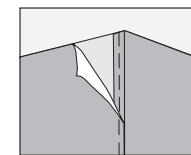
Door and Window Frames

Hang the paper down over the frame lightly and mark the position of the corners. Cut from the waste area of paper in towards these marks. Gently smooth the paper down against the wall and into the edges of the frame. Mark and trim in normal way.



External Corners

Take your paper around the corner by about +/-15mm and trim it to this point. The next section of paper can then be hung vertically, overlapping this +/-15mm and trimmed a fraction back from the corner.



Find your local store using our Store Locator at www.buildit.co.za

Build it
Yes We Can!