



Build it plus

Welcome to Build It PLUS



Build It PLUS

Plan your next D.I.Y. project right from the start.

These Build It D.I.Y. brochures have been compiled especially for you to help you through every step of your home D.I.Y. projects.

We've given you expert advice on what materials you'll need and step-by-step instructions on how to get the job done right, first time.

Please feel free to visit any of our stores and speak to one of our consultants on advice about your projects.

We say **Yes** to getting the job done right



Follow the tips in this guide for great looking

flooring



DECOR

Find your local store using our Store Locator at

www.buildit.co.za

Free

23

Build it

Yes We Can!

Fixing

Vinyl

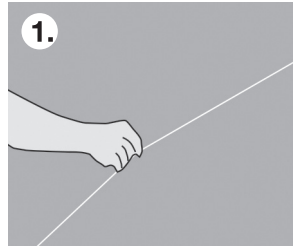
 Floor Tiles

FIXING VINYL FLOOR TILES

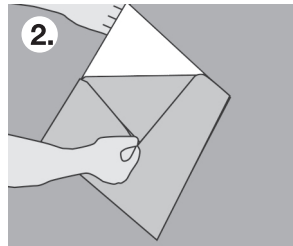
Compared to stone or wooden floor coverings, vinyl tiles offer an inexpensive alternative. They are not hard to lay, but care is needed to ensure a good end result.

TOOLS REQUIRED

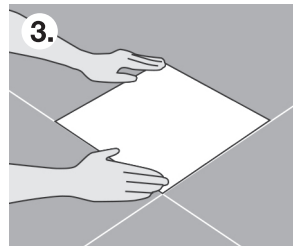
- Hammer
- Chalk Line
- Straight Edge
- Craft Knife
- Measuring Tape



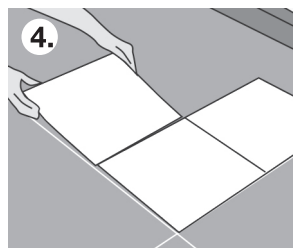
1. Mark the centre of two opposite walls and snap a chalk line or string between the two points. Repeat this on the opposite two walls and you have a centre point.



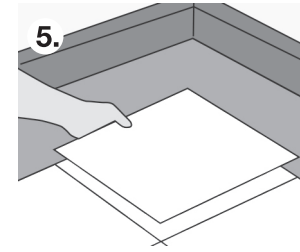
2. Without removing the protective backing, lay out some tiles to see the most effective way of fixing them with minimum wastage and balanced cut edges. Mark your starting point. Lift the tiles and give the floor a vacuum. Peel the backing off the first tile.



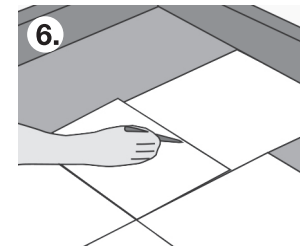
3. Carefully place the tile to the marks made earlier, applying pressure with your hands.



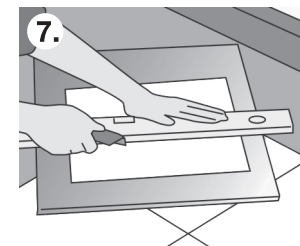
4. Repeat the process, concentrating on one half of the floor and laying a pyramid shape, butting the tiles together.



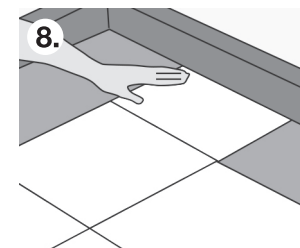
5. For trimming the edges, lay a tile against the wall over the last full tile.



6. Without removing the backing, mark the fixed tile.



7. Transfer marks onto a tile for cutting with a sharp craft knife and a straight edge.



8. Peel the backing paper off and stick the cut tile firmly into place. With your craft knife and straight edge, tidy any rough edges.

Find your local store using
our Store Locator at www.buildit.co.za

Build it
Yes We Can!