

FREE

17

**Build it**



## PLAN YOUR NEXT D.I.Y. PROJECT RIGHT FROM THE START.

These Build It D.I.Y. brochures have been compiled especially for you to help you through every step of your home D.I.Y. projects.

We've given you expert advice on what materials you'll need and step-by-step instructions on how to get the job done right, first time.

Please feel free to visit any of our stores and speak to one of our consultants on advice about your projects.

Find your local store using our Store Locator at [www.buildit.co.za](http://www.buildit.co.za)



**BRA BUILD IT**  
Helping you  
to make home  
building simple.

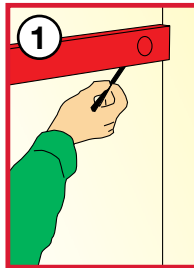
## INSTALLING DADO RAILS



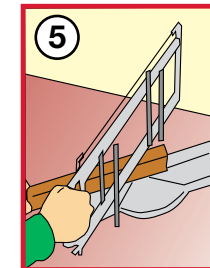
Dado and picture rails can give a room a lift and also added practicality as you can suspend items from them. Both types of rail are easy to fix to the walls.

## TOOLS REQUIRED

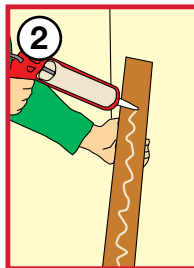
- Mitre Block
- Tenon Saw
- Masonry Bits
- Wood Bits
- Tape Measure
- Square
- Screwdriver
- Drill
- Pencil



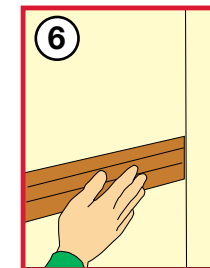
Mark the desired position of the dado rail on the walls. The height you select should not be much higher than a metre from the floor. The height of a picture rail is usually about 300-500mm below the ceiling cornice. Using a spirit level, rotating it as you go, draw a line around the room.



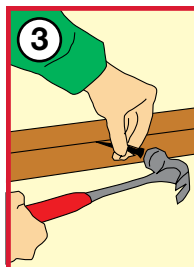
To cut a dado or picture rail you will need a mitre block and tenon saw or a mitre saw. When joining two pieces at a corner, mitre the ends to make a perfect 90° angle. Check each corner using a square. If not square, you will have to make adjustments to the mitre.



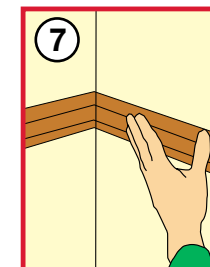
You can buy adhesives to fix timber such as picture and dado rails. Just apply the adhesive with a sealant gun. Always follow the instructions for correct usage.



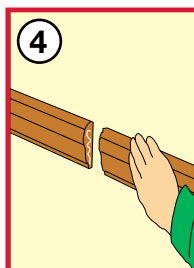
Carefully press the dado rail into place, making sure that the dado or picture rail is correctly set, as the markings are made.



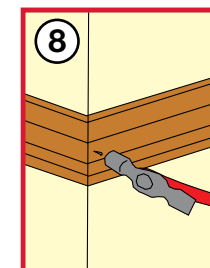
In the case of plastered brickwork, use steel nails and knock below the surface using a punch. Fill the nail holes afterwards with a matching filler. If the surface is too hard for steel nails, nylon wall plugs can be used.



If the corners of your home are perfectly square, you can cut an internal mitre to fit the corners perfectly. Another way to cut two pieces for an internal corner is to cut one piece square-ended and fix it, then scribe the second piece over the first. A scribe is obtained by first cutting an internal mitre. Using a coping saw cut off the mitre leaving just the profile. This should then fit snugly over the first piece.



Two pieces of rail can be joined together by means of mitring on a 45° angle and fixing the first piece. Mitre the second piece to fit perfectly over the first, using a touch of PVA.



Add an extra bit of strength to an external corner by knocking in a pin or two.