

simply

Installing a Security Light



External security lighting provides both peace of mind and useful night-time illumination in the garden. There are a variety of styles of lighting that you can choose from and many of these are quite simple to install.

TOOLS REQUIRED

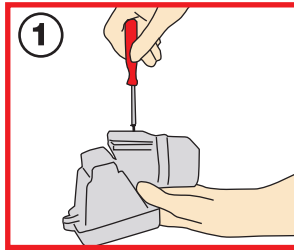
Drill
Masonry Bit
Screwdriver
Wire Stripper

Building made simple!

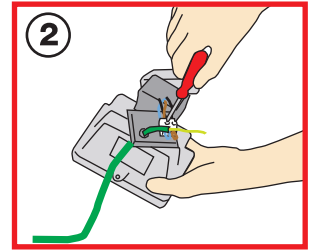
simply Installing a Security Light

Fitting these light are so easy to install, you can link to an existing lighting circuit or a 15-amp plug to an electrical socket.

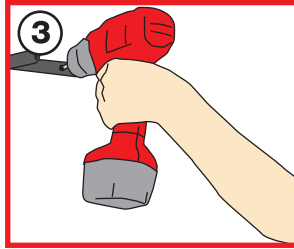
To reveal the connection terminals, unscrew the rear light cover.



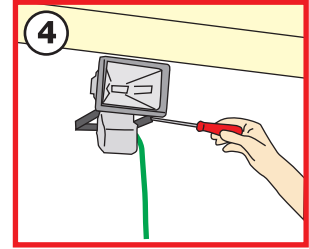
Attach the cord and colour coded wires as per assembly instructions. Secure the rear cover.



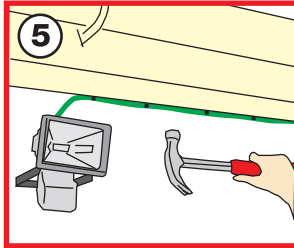
Mount brackets to the wall and fix with plugs and screws. These are normally included with the security light.



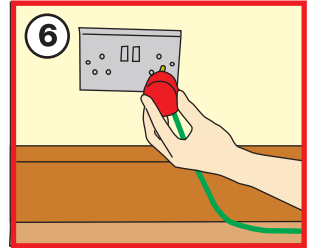
Attach the light unit to the bracket, ensure that the lamp inside is not touched.



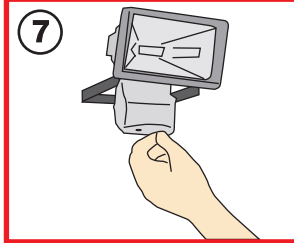
Secure the cord to the fascia or wall. Alternately, drill a hole behind the lamp and feed the cord directly inside.



Here is where you decide whether the light is connected to the house electrical supply or plug into a socket.



For your personal requirements, you may have to adjust the pre-set timer of your security light.



SHOULD YOU HAVE ANY FURTHER QUESTIONS, PLEASE DO NOT HESITATE TO CONTACT YOUR LOCAL BUILD IT STORE.

simply **Build it**

REGIONAL OFFICES

KWAZULU NATAL 031 508 5000	EASTERN CAPE 041 404 5000	WESTERN CAPE 021 550 7300	LOWVELD 013 753 6800
SWAZILAND 013 753 6800	SOUTH RAND 011 821 4000	NORTH RAND 011 203 5300	NAMIBIA 00264 61214201

© 2006 BUILD IT

E & O. E.

Building made simple!